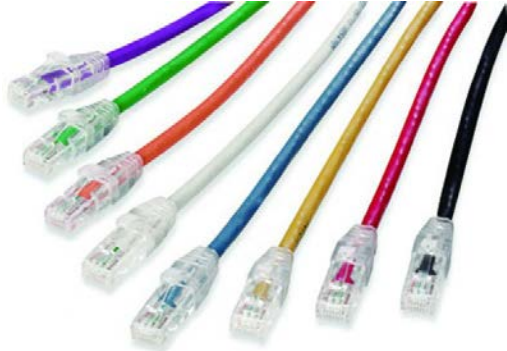


Cat.6A U/UTP 23AWG×4P Solid Patch Cord.



| ITEM | SPECIFICATION |
|----------------------|---|
| JACKET | : Low Smoke Zero Halogen(LSZH) |
| Enhance Connector | : Two-Row RJ45 8P8C Gold Plating |
| Technical Parameters | <ul style="list-style-type: none"> ■ Each pair individual shielded to perform excellent protection against noise. ■ Triple-layer extrusion (Skin/Foam/Skin) on insulation core to perform perfect attenuation ■ 10dB ACR at 600MHZ Positive ACR at 750MHZ ■ Tested up to 750MHZ ■ LSOH version in conformity with IEC 332.3 Cat. C fire retardancy requirements |
| Technical data | <p>Number of Pairs : 4</p> <p>Conductor Material : BC-Solid Bare Copper</p> <p>Wire Gage : 23AWG</p> <p>Conductor Diam. (∅)mm: ∅0.575±0.03mm</p> <p>Elongation : ≥15%</p> <p>Insulation Material : HDPE – Polyethylene</p> <p>Nom. Thickness : 0.233mm</p> <p>Insulation Dia. : ∅1.03±0.05mm</p> <p>Elongation : ≥300%</p> <p>Color Cord Pair 1: White-Blue & Blue Pair 2: White-Orange & Orange Pair 3: White-Green & Green Pair 4: White-Brown & Brown</p> <p>Length of Lay : <20mm</p> <p>Material : HDPE</p> <p>Diameter : 4.5×0.45</p> <p>Order of the Pair : See the Cross Section</p> <p>Out Sheath Color : Orang, Blue, White Rip Cord : 200D×3 Nom. Thickness: 0.60±0.05mm Min. Thickness : 0.55mm Max. overall Dia.: ∅6.0±0.3mm</p> |

